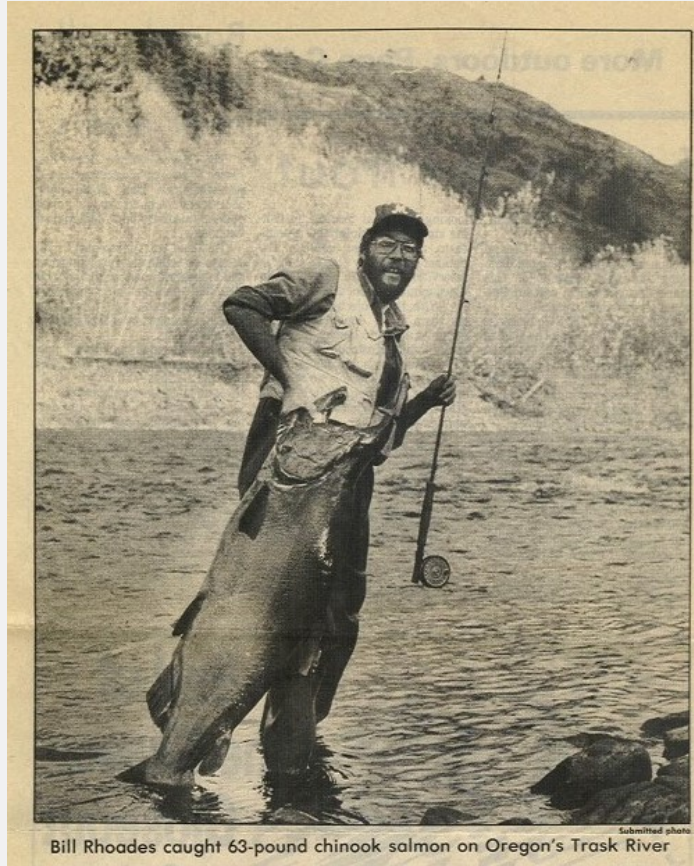


# 2019 Angling Regulation Simplification



Mike Gauvin  
Recreational Fisheries Program Manager  
Commission Update - August 2018



# Regulation Simplification

- In late 2014 and 2015 began process simplify the sportfishing regulations
- Focused on streamlining seasons, gear types, bag limits
- Easier to read, consistent format, reduced page numbers
- Centered on trout and warmwater species
- Implemented in 2016
- 2017 further refined regulations for 2018
- Late 2017 began salmon/steelhead simplification process



# Regulation Simplification

- Salmon and Steelhead
  - Managed closely to provide opportunity
  - ESA constraints are often in place
  - Many populations are managed under the Coastal Multi-Species Plan or other Conservation plan.
  - Finding that balance between conservation and opportunity is key.



# Regulation Simplification

- Seasonal Consistency
  - Primary changes for Salmon and Steelhead
- Zone Regulations Reformat
- Possession Limits
- Combined angling tag
- Striped Bass



# Seasonal Consistency



# North Coast Current

	Jan	Feb	Mar	Apr	May	Jun	Jul	Aug	Sep	Oct	Nov	Dec
Beaver Creek (Nestucca Basin, Tillamook Co.)												
Cook Creek (Tillamook Co.)												
Ecola Creek												
Kilchis River- Hwy 101 to Br. RM11	X	X	X	X	X	X	X	X	X	X	X	X
Kilchis River- RM11 to NF												
Little Nestucca River-Hwy 101 to Dolph												
Miami River												
Necanicum River												
Nehalem River- to Foss Rd.												
Nehalem River- Foss Rd. to Elsie Br.												
Nehalem River- Above Elsie Br.												
Nehalem River NF- Mouth to Hwy 53 Br.												
Nehalem River NF-Hwy 53 Br. To MP6												
Neskowin Creek												
Nestucca River- Mouth to first br.	X	X	X	X	X	X	X	X	X	X	X	X
Nestucca River- First br. To Moon Cr.	X	X	X	X	X	X	X	X	X	X	X	X
Nestucca River- Moon Cr. to Elk Cr.												
Rock Creek (Clatsop/Columbia Co.)												
Salmonberry River												
Sand Lake Estuary												
Soapstone Creek												
Three Rivers- Mouth to Weir	X	X	X	X	X	X	X	X	X	X	X	X
Three Rivers- Above Weir	X	X	X	X	X	X	X	X	X	X	X	X
Tillamook Bay	X	X	X	X	X	X	X	X	X	X	X	X
Tillamook River												
Trask River	X	X	X	X	X	X	X	X	X	X	X	X
Trask River NF												
Trask River SF												
Wilson River	X	X	X	X	X	X	X	X	X	X	X	X
Wilson River LNF												
Wilson River SF												

- Expanded season for steelhead
- Expanded season for Chinook
- Reduced season for steelhead
- Reduced season for Chinook
- Open for hatchery steelhead
- Open for Chinook Salmon

# North Coast Proposed

	Jan	Feb	Mar	Apr	May	Jun	Jul	Aug	Sep	Oct	Nov	Dec
Beaver Creek (Nestucca Basin, Tillamook Co.)												
Cook Creek (Tillamook Co.)												
Ecola Creek												
Kilchis River- Hwy 101 to Br. RM11	X	X	X	X	X	X	X	X	X	X	X	X
Kilchis River- RM11 to NF												
Little Nestucca River-Hwy 101 to Dolph	X	X	X	X	X	X	X	X	X	X	X	X
Miami River												
Necanicum River												
Nehalem River- to Foss Rd.	X	X	X	X	X	X	X	X	X	X	X	X
Nehalem River- Foss Rd. to Elsie Br.												
Nehalem River- Above Elsie Br.												
Nehalem River NF- Mouth to Hwy 53 Br.	X	X	X	X	X	X	X	X	X	X	X	X
Nehalem River NF-Hwy 53 Br. To MP6												
Neskowin Creek												
Nestucca River- Mouth to first br.	X	X	X	X	X	X	X	X	X	X	X	X
Nestucca River- First br. To Moon Cr.	X	X	X	X	X	X	X	X	X	X	X	X
Nestucca River- Moon Cr. to Elk Cr.												
Rock Creek (Clatsop/Columbia Co.)												
Salmonberry River												
Sand Lake Estuary												
Soapstone Creek												
Three Rivers- Mouth to Weir	X	X	X	X	X	X	X	X	X	X	X	X
Three Rivers- Above Weir	X	X	X	X	X	X	X	X	X	X	X	X
Tillamook Bay	X	X	X	X	X	X	X	X	X	X	X	X
Tillamook River												
Trask River	X	X	X	X	X	X	X	X	X	X	X	X
Trask River NF												
Trask River SF												
Wilson River	X	X	X	X	X	X	X	X	X	X	X	X
Wilson River LNF												
Wilson River SF												

- X Expanded season for steelhead
- X Expanded season for Chinook
- 0 Reduced season for steelhead
- 0 Reduced season for Chinook
- X Open for hatchery steelhead
- X Open for Chinook Salmon

# North Coast If Adopted

	Jan	Feb	Mar	Apr	May	Jun	Jul	Aug	Sep	Oct	Nov	Dec
Beaver Creek (Nestucca Basin, Tillamook Co.)												
Cook Creek (Tillamook Co.)												
Ecola Creek												
Kilchis River- Hwy 101 to Br. RM11	X	X	X	X	X	X	X	X	X	X	X	X
Kilchis River- RM11 to NF												
Little Nestucca River-Hwy 101 to Dolph	X	X	X	X	X	X	X	X	X	X	X	X
Miami River						X	X	X	X	X	X	X
Necanicum River						X	X	X	X	X	X	X
Nehalem River- to Foss Rd.	X	X	X	X	X	X	X	X	X	X	X	X
Nehalem River- Foss Rd. to Elsie Br.												
Nehalem River- Above Elsie Br.												
Nehalem River NF- Mouth to Hwy 53 Br.	X	X	X	X	X	X	X	X	X	X	X	X
Nehalem River NF-Hwy 53 Br. To MP6												
Neskowin Creek												
Nestucca River- Mouth to first br.	X	X	X	X	X	X	X	X	X	X	X	X
Nestucca River- First br. To Moon Cr.	X	X	X	X	X	X	X	X				
Nestucca River- Moon Cr. to Elk Cr.												
Rock Creek (Clatsop/Columbia Co.)												
Salmonberry River												
Sand Lake Estuary												
Soapstone Creek												
Three Rivers- Mouth to Weir	X	X	X	X	X	X	X	X		X	X	X
Three Rivers- Above Weir	X	X	X	X	X	X	X	X	X	X	X	X
Tillamook Bay	X	X	X	X	X	X	X	X	X	X	X	X
Tillamook River						X	X	X	X	X	X	X
Trask River	X	X	X	X	X	X	X	X	X	X	X	X
Trask River NF												
Trask River SF												
Wilson River	X	X	X	X	X	X	X	X	X	X	X	X
Wilson River LNF												
Wilson River SF												

- X Expanded season for steelhead
- X Expanded season for Chinook
- O Reduced season for steelhead
- O Reduced season for Chinook
- X Open for hatchery steelhead
- X Open for Chinook Salmon

# North Coast Proposals

- Expanded seasons for Chinook :
  - 8 waterbodies (Little Nestucca, Necanicum, NF Nehalem, Nehalem, Nestucca, Three Rivers, Tillamook, Trask, and Wilson Rivers) – Open all year.
- Expanded seasons for hatchery steelhead:
  - 5 waterbodies (Little Nestucca, NF Nehalem (2 sections), Sand Lake Estuary, and Soapstone Cr) Open all year.
- Reduced seasons for Chinook:
  - None
- Reduced seasons for hatchery steelhead:
  - 4 waterbodies ( Cook Creek, Ecola Creek, Neskowin River, and Salmonberry River)
    - All would be open: Jan – March and December

# Zone Regulations

- Move redundant zone regulations out of each zone and create statewide table
- Carp
- Bullfrogs
- Crayfish
- Freshwater clams and mussels
- Smelt
- Warmwater species
- Etc...



# Statewide Regulations Table Example

Species	Bag Limit	Size limit and other specifications	Season
Crayfish	100 per day, 2 daily limits in possession.	<ul style="list-style-type: none"> <li>Neither an angling nor a shellfish license is required.</li> <li>All streams are open to crayfish harvest including streams listed as <b>closed</b> under <b>Exceptions</b>.</li> </ul>	Open all year.
Freshwater Clams and Mussels	Harvest prohibited.	It is illegal to harvest or possess any freshwater mussels or clams.	<b>Closed.</b>
Bullfrogs	No limit.	An angling license is not required.	Open all year.
Smelt	<ul style="list-style-type: none"> <li>Unless specifically authorized under emergency rules, it is unlawful to take or attempt to take Eulachon smelt in inland waters, including bays, rivers, estuaries, and streams.</li> <li>For smelt species other than Eulachon smelt, see Marine Zone regulations page 81 for allowed Harvest Methods and other Restrictions. An angling license is required.</li> </ul>		
Marine Fish and Marine Shellfish	See <b>Marine Zone</b> , pages 80-87.		
Bluegill, Catfish, Crappie, Other Sunfish, Walleye, and Yellow Perch	No Limit, except as noted under <b>Exceptions</b> .	No minimum length unless noted under <b>Exceptions</b> .	<b>Lakes:</b> Open all year.



# Possession Limit

- Maximum number or amount of a single type of fish or shellfish that a person may lawfully possess in the field, or in transit to the place of permanent residence
- Doesn't apply to Salmon/ Steelhead because of harvest cards
- Doesn't apply to local anglers as they can return to permanent residence each day
- Provides OSP an additional enforcement tool
- Increase trout and warmwater to **three daily limits** in possession



# Combined Angling Tag

## Current

Species	Location	Size	Month	Day
1W	97	30	5	3
6	70	24	2	12
2	71	28	11	21
6W	92	25	3	7

1	Chinook, Fin-Clipped (Hatchery)
1W	Chinook Unmarked (Wild)
2	Coho Fin-Clipped (Hatchery)
2W	Coho Unmarked (Wild)
3	Other Salmon – Pink; Chum; or Sockeye
6	Steelhead Fin-Clipped (Hatchery)
6W	Steelhead Unmarked (Wild)
7	White Sturgeon
9	Halibut

## Proposed

Species	Hatchery	Wild	Location	Month	Day
1		X	97	5	3
6	X		70	2	12
2	X		71	11	21
6		X	92	3	7

1	Chinook
2	Coho
3	Other Salmon – Pink; Chum; or Sockeye
6	Steelhead
7	White Sturgeon
9	Halibut



# Striped Bass

## Current Regulations

- NW / SW - 24 inch minimum length, artificial flies and lures in streams above tidewater, May 22- Aug 31
- Willamette – 30 inch minimum length, artificial flies and lures
- Columbia – 24 inch minimum
- Marine- 24 inch minimum
- Bag limit - 2 per 24 consecutive hours, 2 daily limits in possession

## Proposed Statewide Regulation

- No bag or size limits



# Public Meetings

- Coos Bay (North Bend), June 5, North Bend Library
- Newport, June 6, Hallmark Resort
- Tillamook, June 7, Tillamook County Library
- Seaside, June 13, Seaside Convention Center
- Hillsboro, June 14, NW Steelheaders, Tualatin Valley Chapter Meeting)



# Questions?

